

## Committees and Teams



### Church Council

The Church Council oversees the general administration of the church. Plans, policies, and procedures developed by work area and task committees impacting other areas of church are presented to this group for approval. The Church Council reports to the Charge Conference which meets annually or by special call. The board meets on the fourth Monday in Jan., Mar., July, Sept., Nov.



the

### Audit Committee

At least annually the Audit Committee provides an internal review of the Church financial books and records for completeness, accuracy, and proper procedures. Interim reviews may be conducted as needed. Recommendations for improvement or enhancement and/or items of concern are reported in writing to the Finance Committee and to the Administrative Board.



### Board of Trustees

Trustees are responsible for the care and maintenance of the church buildings, grounds, and all of its property and investments. They also oversee the Parsonage committee. They are responsible for contracted services dealing with church property and periodically sponsor "Church Work Days" to deal with light repair and maintenance projects. They meet on the second Monday of each month.



### Children's Ministry Team

The Children's Ministry Team works with children ages birth through fifth grade. Some of the past activities have been PJ Story Hour, Roller Skating, Easter Egg Hunt, Trick or Trunk, and Game Night.

## Christian Education Team

The Education Team's objective is to introduce persons to Jesus Christ and to assist in the growth and development of Christian Disciples. The Education Team is in charge of getting Sunday School Teachers, short term adult studies, Vacation Bible School, Camping ministries, and Confirmation. Our goal is help everyone grow in their faith walk.



*Welcome  
To our Church*

## Outreach and Witness Team

The Outreach and Witness team seeks to reach out in Christian love to others. We take turns being available at our Welcome table in the back of the sanctuary where new people can go to ask questions about Sunday School, Children's programs, Youth opportunities, Music programs, etc. We want to be able to answer any questions that a newcomer might have. Outreach wants you to feel welcome, and to help you identify a meaningful place to serve in the name of Jesus Christ.

## Finance Committee

The Finance Committee is responsible for preparing a recommended annual budget and for monitoring all financial matters of the church including the safe-guarding of assets through proper internal control and separation of duties. Finance is responsible for Stewardship campaigns, quarterly Statements of Giving sent to donors, and required IRS reporting. They prepare year-end Conference and Charge conference reports.



## Historians

The committee collects and promotes within the local church, an appreciation for our individual, church, and denominational history and tradition. They sponsor special services and events relating to our church's heritage and progress in mission and ministry in Effingham, Illinois.



## Lay Leadership Committee

This committee is responsible for connecting people with individual gifts, skills, talents, abilities and interests with the administrative, mission, and ministry opportunities within our church and community. Centenary UMC follows, in most cases, a three-year term for church offices and ministry. While the human tendency is to fill slots, the committee's passion is to connect people with meaningful ministry opportunities.



## Higher Education & Campus Ministry

The arm of Member Care seeks to maintain the connection with our college age students while away, and to promote opportunities for them during holiday and summer breaks. Members of the congregation respond to this need by "Adopting a Student" for special "care packages", notes of encouragement, cards, and phone calls. A High School Senior recognition breakfast and other worship recognition have been a part of this ministry.

## Member Care Team

Member Care deals with the care and nurture of our church family. They strive to stay connected with those who are dealing with special issues in their life by sending get well, birthday, and sympathy cards, by delivering flowers to our elderly, by taking communion to shut-ins, taking meals to families when they have a new baby, preparing funeral dinners and sponsoring grief support and other helping ministries.

## Grief Support Team

Lay persons volunteering to be a part of this team have received training in how to provide emotional support to members of the church family at the time of a loss due to death. This may include a variety of activities best suited to each individual need.



Comfort those in any trouble with the comfort we ourselves have received from God.

2 Corinthians 1:4



## Memorial Committee

This group ensures that memorial gifts are properly acknowledged and administered and used in a way that honors and respects our deceased members. They are available to assist families in identifying and securing appropriate memorial items.



## Missions Committee

The Mission Committee helps our people become involved in United Methodist and other cooperative missions here and around the world. They sponsor mission education and awareness opportunities in worship, through the newsletter, and at special mission events. The mission committee seeks to maintain Centenary's Five Star Church status, corresponds with church sponsored missionaries, identifies local needs, promotes various mission initiatives and events, and recommends special offerings recipients.

## Staff/Pastor-Parish Relations Committee



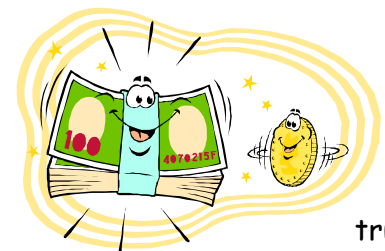
This group attends to the staffing and personnel matters at Centenary. In cooperation with the pastors they consult with and advise the church staff on the goals of the church. They work with the District Superintendent and the Bishop on pastoral appointments, oversee employment, develop and revise job descriptions, provide support and encouragement to pastors and staff,

address employer/employee accountability issues, and make recommendations for pastor and staff salaries.



## Endowment Fund

A fund established to receive gifts and bequests from individuals, organizations, or trusts wishing to leave a lasting gift to Centenary United Methodist Church. Gifts to the Endowment Fund are restricted in that the gifts will remain in the fund and never be spent. Endowment committee is authorized to work with individuals and/or as well as their professional advisors in assisting those wishing to make and/or estate bequests to Centenary United Methodist Church, and in investing and administering the fund.



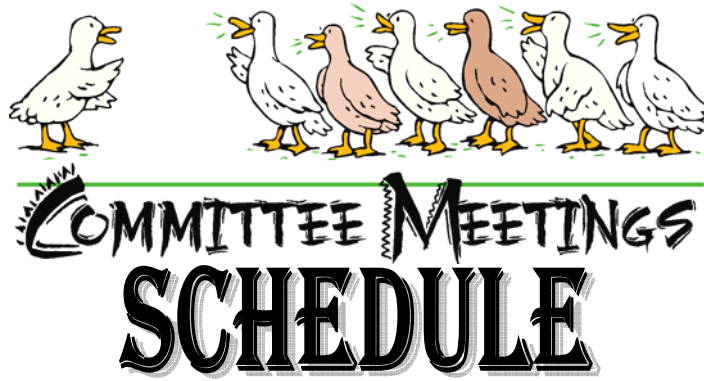
lifetime gifts

## Vision Team

The Vision Team serves as a sounding board and resource for the pastor in organization and scheduling of worship experiences. Realizing that tastes and experiences differ among church membership and age groups, the Vision Team seeks to identify and promote a variety of experiences representing the entire church rather than to promote their individual tastes and preferences.

Welcome Team assist in the services by welcoming people to the worship service, distributing bulletins, counting attendance, taking collection of offering, adjusting thermostats, turning lights on and off, and straightening up the sanctuary following the service.





**Church Council**

4<sup>th</sup> Monday evening @ 7:00 p.m. January, March, May, July, September, November

**Vision Team**

2<sup>nd</sup> Monday evening at 7:00 p.m. February, April, June, August, October

**Trustees**

Meets the 2<sup>nd</sup> Monday @ 6:00 p.m.

**Finance Committee**

3<sup>rd</sup> Monday evening @ 7:00 p.m.

**Member Care**

3<sup>rd</sup> Thursday morning @ 10:00 a.m. in January, April, October -

**Memorial Committee**

2<sup>nd</sup> Thursday morning @ 10:00 a.m. in February, April, June, August, October

**Outreach and Witness Team**

No set schedule

**Children's Ministry Team**

Meets as needed

**Education Team**

No set schedule